

2876 25TH STREET

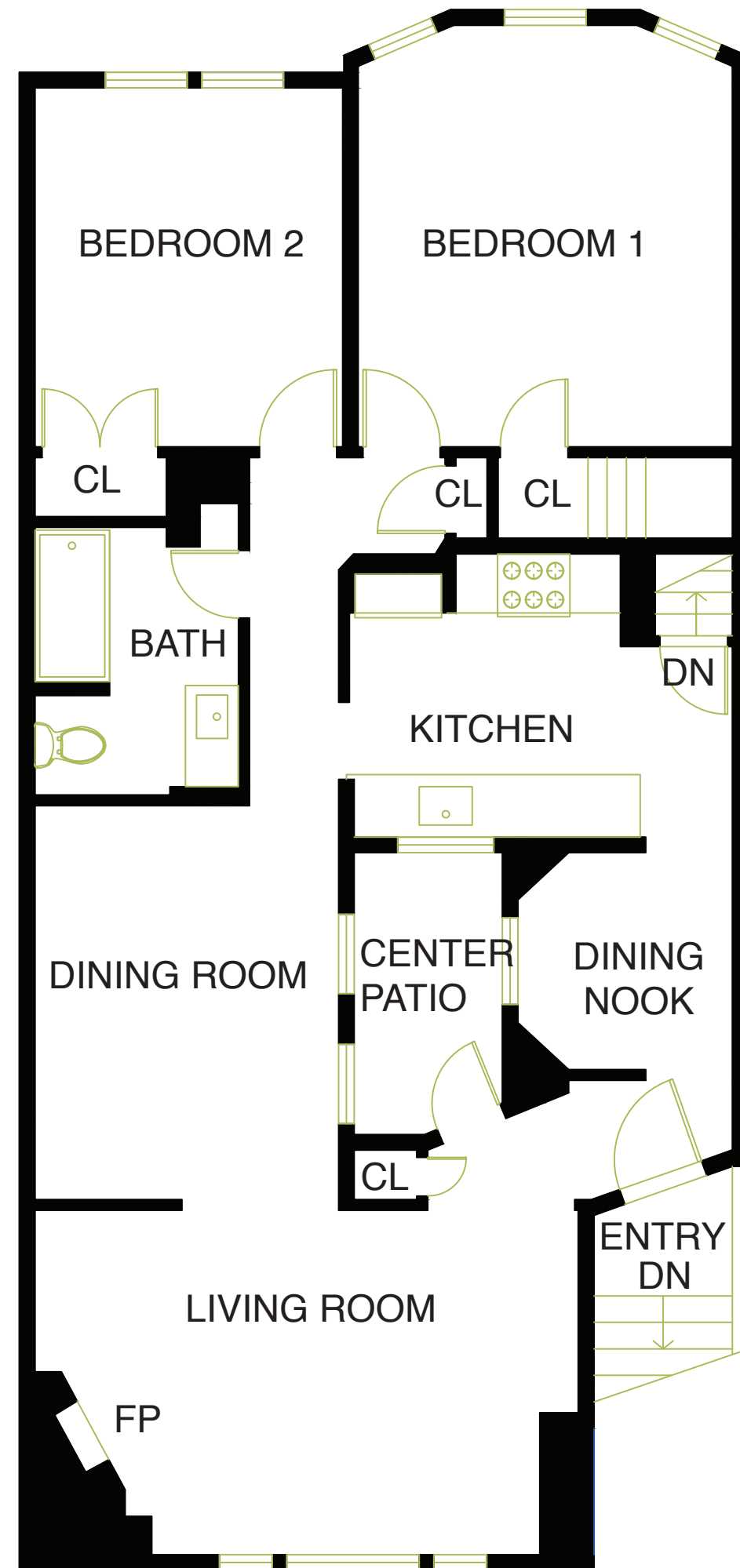
TOTAL LIVING : APPROX. 1568 SQF

1,566 SQF Per Tax Record

MAIN LEVEL

LIVING
APPROX. 1196 SQF

CENTER PATIO
APPROX. 65 SQF

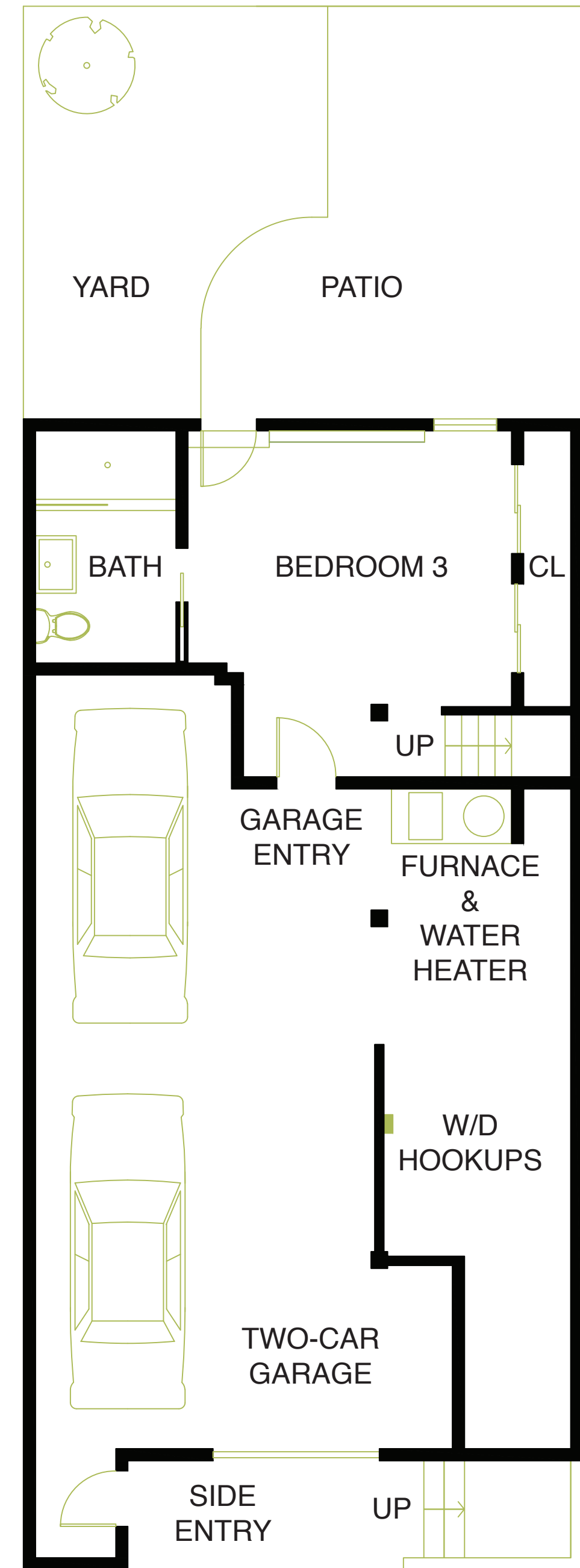


LOWER LEVEL

LIVING
APPROX. 372 SQF

GARAGE
APPROX. 833 SQF

YARD & PATIO
APPROX. 468 SQF



NOTE: FLOOR PLANS, SQUARE FOOTAGE, AND DIMENSIONS ARE APPROXIMATE AND NOT FOR CONSTRUCTION PURPOSES. PROSPECTIVE BUYERS SHOULD NOT RELY ON THESE PLANS, SQUARE FOOTAGE, AND DIMENSIONS IN MAKING THEIR PURCHASE DECISION AND SHOULD CAREFULLY VERIFY THE ABOVE ITEMS AND ALL OTHER INFORMATION HEREIN.