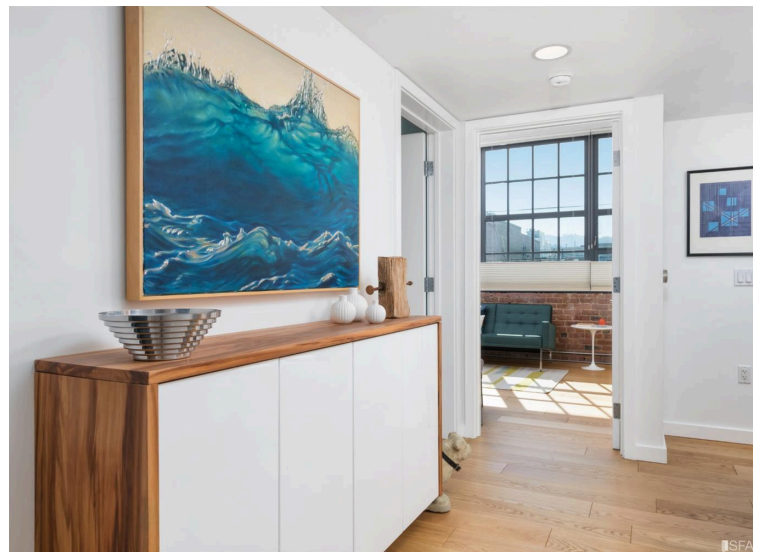
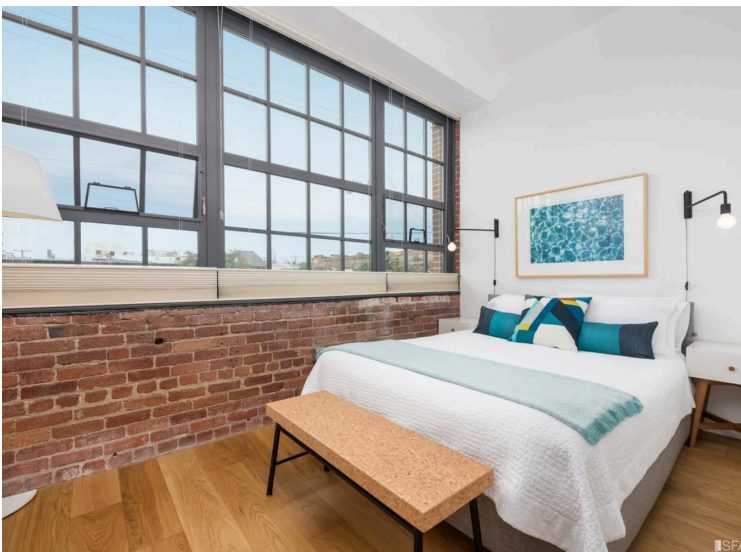


# COMPASS



Inner Mission  
2101 Bryant Street, Unit 204

# Brick and Timber Condo | The Union SF

Welcome to 2101 Bryant Street, Unit 204, a two bedroom, two bathroom condo with two-car parking located in the original brick and timber portion of Union SF at the nexus of two of San Francisco's most vibrant and diverse neighborhoods. Combining classic yet contemporary luxury, a dash of San Francisco history, and a gorgeous and expansive shared outdoor space, you'll love upgrades like newly installed French white oak hardwood floors, Viking appliances, and Ann Sacks tiles, along with a floor plan that makes this airy condo feel even more spacious. In the heart of the Mission at the foot of Potrero Hill, the neighborhood offers an abundance of culture, creativity, food, and nightlife.

Visit [2101Bryant.com](http://2101Bryant.com) for more information.

## The Home

- Two-Bedroom, Two-Bath Brick and Timber Condo
- Two-Car Garage Parking
- Original Brickwork and Huge Windows
- Views of Twin Peaks and Sutro Tower
- New White French Oak Hardwood Floors
- Viking Stainless Steel Kitchen Appliances
- In-Unit Laundry
- Equipped with A/C
- Nest Thermostat
- Square Feet: 1,025 Per Tax Record
- HOA Per Month: \$501 (\$398.40 + \$102.86 parking)
- Renovated Kitchen

## The Building

- 76 Units (2101 & 2125 Bryant Street)
- One Designated Storage Unit
- Shared Bike Storage
- Richly Landscaped Common Space with a Water Feature, a Fire Pit, Six Burner Grill with a Rotisserie and Two Separate Seating Areas — perfect for entertaining (or just hanging out on a sunny day)



**Danielle Lazier**

Seller's Agent  
DRE#: 01340326  
415.528.7355  
[hello@daniellelazier.com](mailto:hello@daniellelazier.com)



**Sally Thompson**

Buyer's Agent  
DRE#: 01382744  
415.812.7032  
[sally@daniellelazier.com](mailto:sally@daniellelazier.com)

