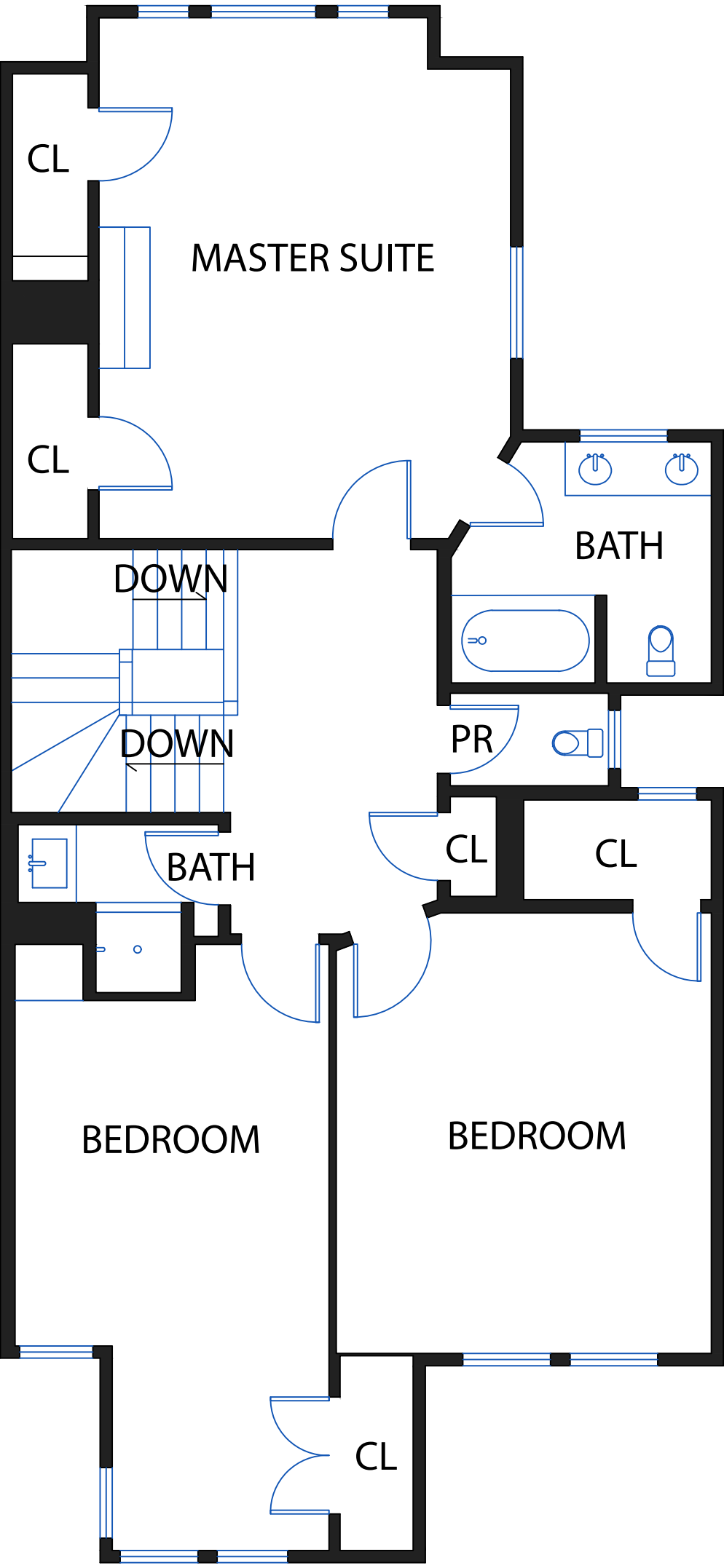


1088 ASHBURY STREET  
(APPROX. 2,140 SQFT)

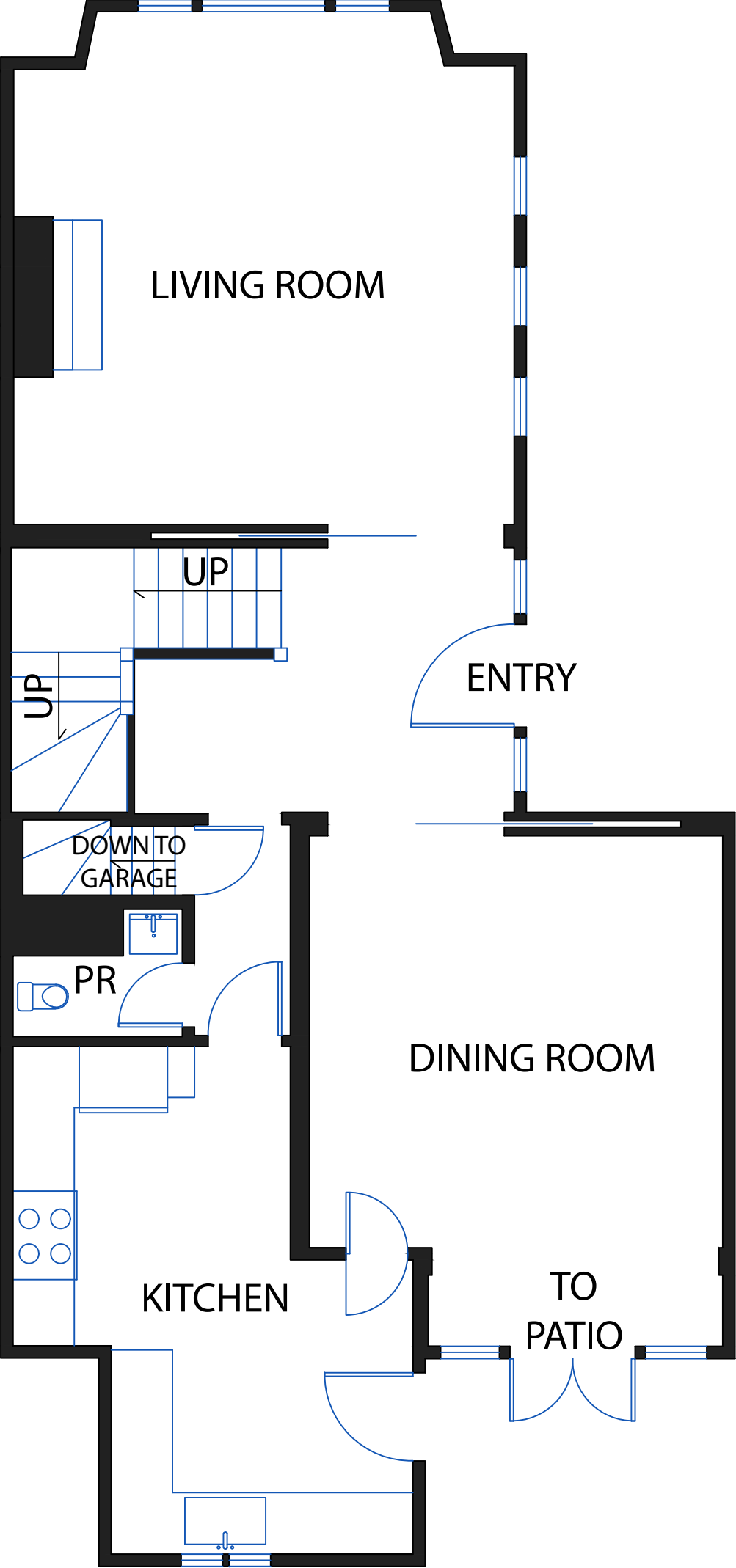
UPPER LEVEL

(APPROX. 1,113 SQFT)



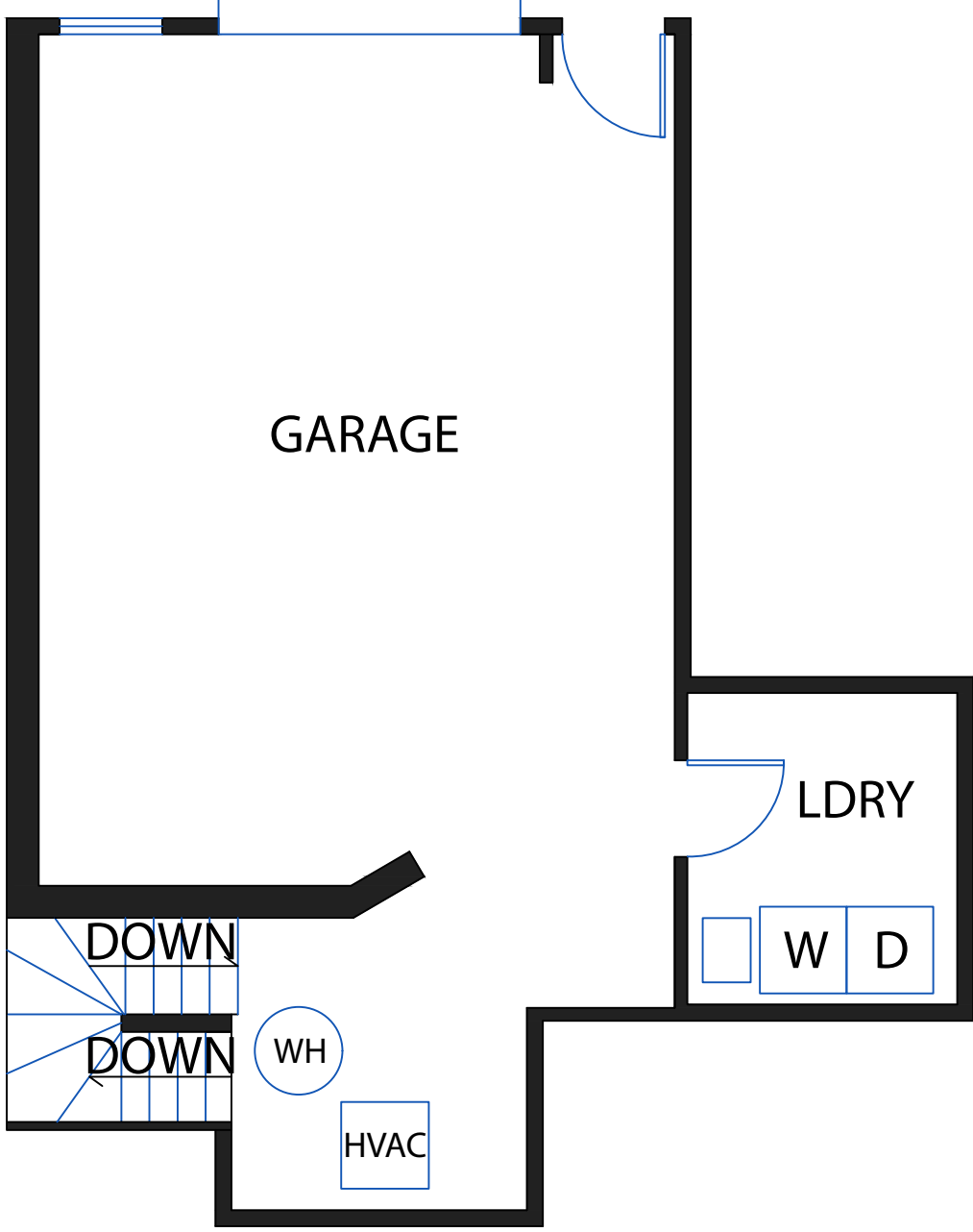
MAIN LEVEL

(APPROX. 1,027 SQFT)



GARAGE

(APPROX. 620 SQFT)



NOTE: FLOOR PLANS, SQUARE FOOTAGE AND DIMENSIONS ARE APPROXIMATE AND NOT FOR CONSTRUCTION PURPOSES. A PROSPECTIVE BUYER SHOULD NOT RELY ON THESE PLANS, SQUARE FOOTAGE AND DIMENSIONS IN MAKING THEIR PURCHASE DECISION AND SHOULD CAREFULLY VERIFY THE ABOVE ITEMS AND ALL OTHER INFORMATION HEREIN.