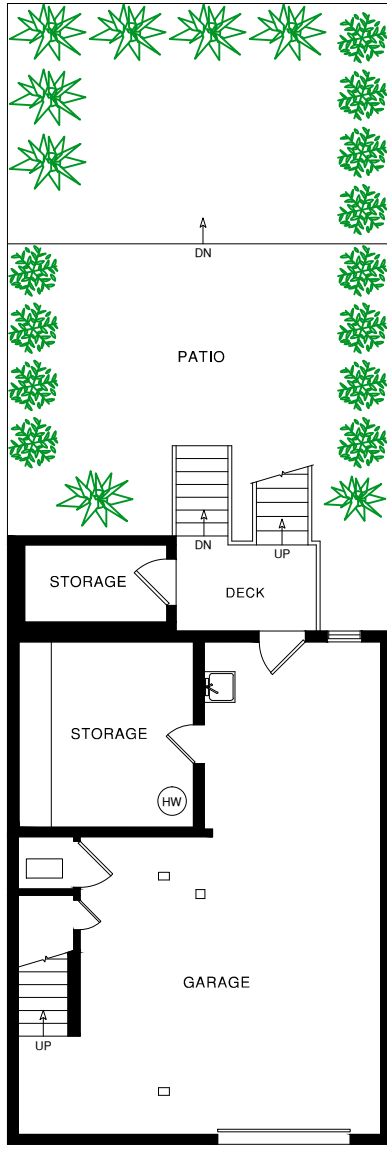




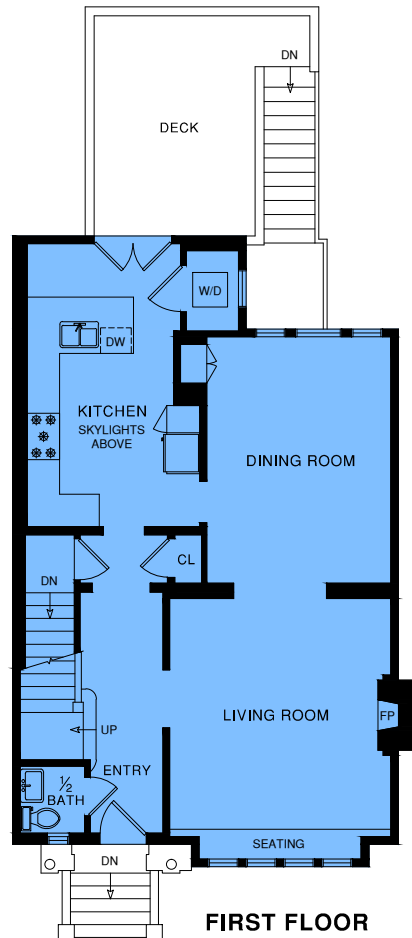
COMPASS

# 155 DOWNEY STREET

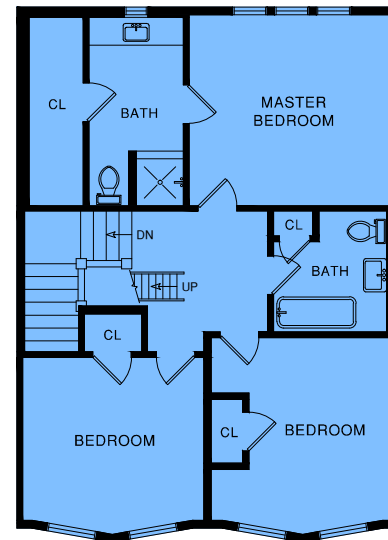
2,150 SQ FT



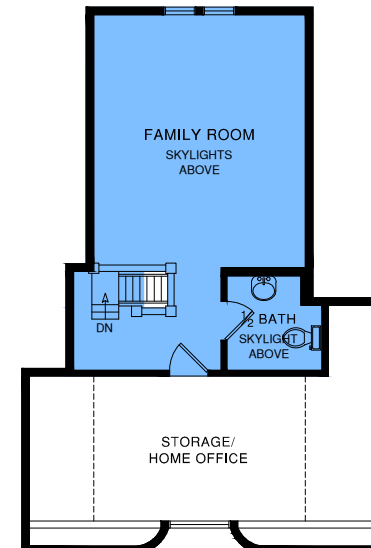
**GARAGE**



**FIRST FLOOR**  
940 SQ FT



**SECOND FLOOR**  
850 SQ FT



**THIRD FLOOR**  
360 SQ FT



Compass is a licensed real estate broker (01991628) in the State of California and abides by Equal Housing Opportunity laws. All material presented herein is intended for informational purposes only. Information is compiled from sources deemed reliable but is subject to errors, omissions, changes in price, condition, sale, or withdrawal without notice. No statement is made as to accuracy of any description. All measurements and square footages are approximate. Exact dimensions can be obtained by retaining the services of an architect or engineer. This is not intended to solicit property already listed. [Danielle Lazier CarBRE# 1340326]